

Date: _____

Type: _____

Project: _____

SOX-WM WALL MOUNT

Modern and simple design. Wall mounted down light fixture with TYPE-II, TYPE-III, TYPE-IV light distribution.

Construction: Fixture housing constructed from aluminum alloy. Weatherproof silicon gasket seal for all weather protection. Stainless steel external hardware for corrosion resistance.

Mounting: Fixture is suitable to mount over octagonal J-box. (North America only)

Lens: Clear lens

Lamp: High power LEDs with 50,000 hrs. rated lamp life
L70% lumen maintenance
3000K, 3500K, 4000K, 5000K color temperature
CRI 80

Light distribution: Type II, Type III, Type IV

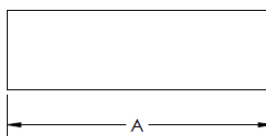
Driver: 60Hz, 120-277V / 347V electronic LED driver, thermally protected with low THD. 6kV native surge protection and 4kV EFT with Ambient Operating Temperature -40°C to 55°C.

Options: 0-10V Dimming, 1% Dimming, Wet location

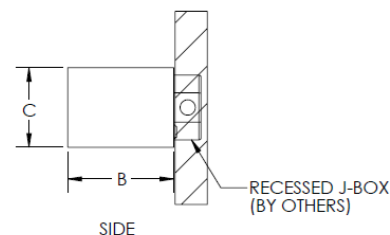
Finish: Black, White, Silver Gray, Bronze
(Custom color available upon request)

Listing: Complies with CSA & UL Standards, for indoor and outdoor location.

Warranty: [5-year limited warranty](#)



FRONT



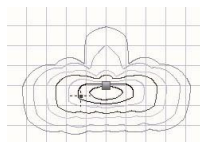
SIDE



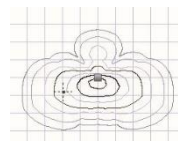
BOTTOM

FIXTURE	"DIM-A"	"DIM-B"	"DIM-C"
SOX-WM-S	10.00	6.00	4.50
SOX-WM-L	15.00	6.00	4.50

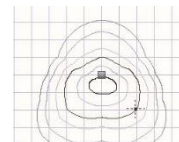
Distributions:



TYPE-II



TYPE-III



TYPE-IV



CUSTOM ARCHITECTURAL LIGHTING

• 120 Walker Dr, Brampton, ON L6T 4G9 CANADA

Toll free: 1 877 765 3722

Fax: 905 457 1115

soleracorp.com

--	--	--	--	--	--	--	--	--

Name	Light Engine	Color Temperature	Electrical	Mounting	Lens	Light Pattern	Options		Finish
SOX-WM-S	20W LED (max)	3000K	UNV	WM-OCT	CPL	TY2	DM	DM1	BL
SOX-WM-L	40W LED (max)	3500K	HLV			TY3	TP	WL	BZ
		4000K				TY4	TS		WH
		5000K							SG
Contact Factory for custom dimensions									CC

Notes:

- UNV – Universal voltage (120V - 277V)
- HLX – 347V line voltage
- WM-OCT – Wall mount over octagonal J-box (North America only)
- CPL – Clear lens
- TY2 – Type II light distribution
- TY3 – Type III light distribution
- TY4 – Type IV light distribution
- DM – 0-10V dimming
- DM1 – 1% dimming
- TP – Tamperproof hardware
- TS – Tamperproof bits
- WL – Wet location
- BL – Minitex black
- BZ – Minitex bronze
- WH – Minitex white
- SG – Minitex silver gray
- CC – Custom color (Confirm RAL No. prior to production)