



Date
Quote #
Project Name
Type



## SNTC - Pole Mount

### Description:

Head spun aluminum housing construction with decorative cage assembly, and an opal acrylic lens. All external hardware is stainless steel.

Name  - Engine  - Lumens  - CCT  - Electrical  - Mounting  - Lens  - Pattern  - Options  - Finish

Name	Light Engine	Source Lumens <sub>(LED)(5000K)</sub>	Color Temp	Electrical
SNTC	42W LED (Max)	5460	3000K	UNV 120-277V
			3500K	HLV 347-480V
			4000K	
			5000K	

Mounting		Lens		Light Pattern		Options		Finishes	
ER3	Arm for round or square pole	CPL	Clear polycarbonate lens (Std)	TY5	Type V (Std)	SD	Step dimming	Standard	
DA4	Decorative straight arm for 4" pole	CAL	Clear acrylic lens	TY3	Type III	MS	Motion sensor	BL	Black
DA5	Decorative straight arm for 5" pole					TP	Tamperproof hardware	WH	White
WM1	Single straight arm					TS	Tamperproof screws	SG	Silver Grey
						PC	Bottom photocell	BZ	Bronze
						PC	Bottom photocell	CC	Custom
						GFI	Ground fault interrupter	Custom Color	
						PCR	Photocell receptacle	See website for custom colors. Contact factory for physical samples.	
						TCO	Trespass cut off		

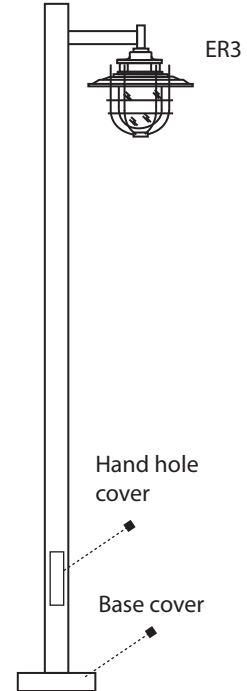
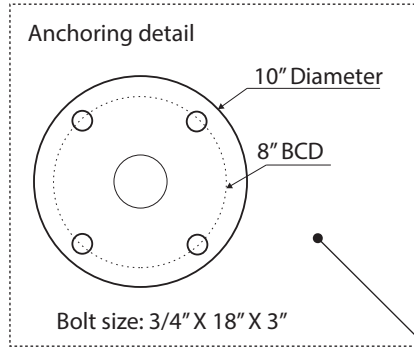
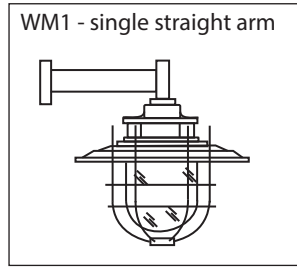
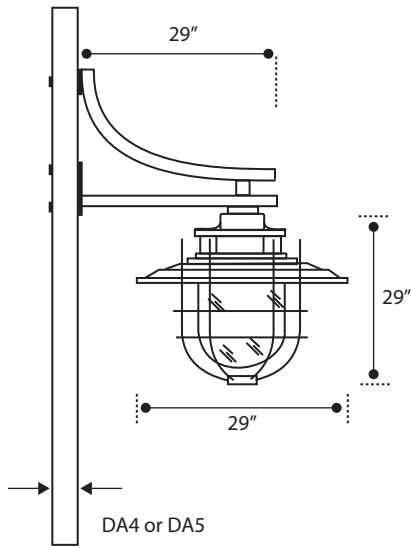
- Lumens are based on max wattage & 5000K CCT
- IES files available upon request
- Std - Standard Offering





**Dimensions & Mounting:**

Please note that drawings are not to scale.



**Listing:**

Complies to CSA and UL standards.

**Polar Graph:**

