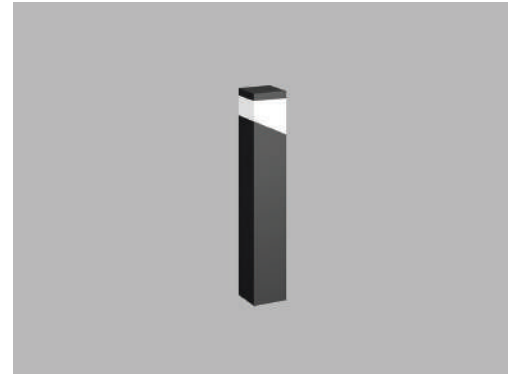




Date
Quote #
Project Name
Type



CLEO - Bollard

Description:

CLEO is a square bollard with a trapezoid cut lens giving it a futuristic look. All external hardware is stainless-steel.

Name - Engine - Lumens - CCT - Electrical - Mounting - Lens - Pattern - Options - Finish

Name	Light Engine	Source Lumens _{(LED)(5000K)}	Color Temp	Electrical
CLEO	15W LED (Max)	5450	3000K	UNV 120-277V
			3500K	HLV 347-480V
			4000K	
			5000K	
Contact for custom		Contact for custom	Contact for custom	

Mounting		Lens		Light Pattern		Options		Finishes	
ABT	Anchor, bolts & template	OAL	Opal acrylic lens (Std)	TY5	Type V (Std)	MS	Motion sensor	Standard	
						SD	Step dimming	BL	Black
						TP	Tamperproof hardware	WH	White
						TS	Tamperproof screws	SG	Silver Grey
								BZ	Bronze
						PC	Button photocell	Custom	
								CC	Custom Color
						GFR	Ground fault receptacle	See website for custom colors. Contact factory for physical samples.	
						SF	Single fuse		

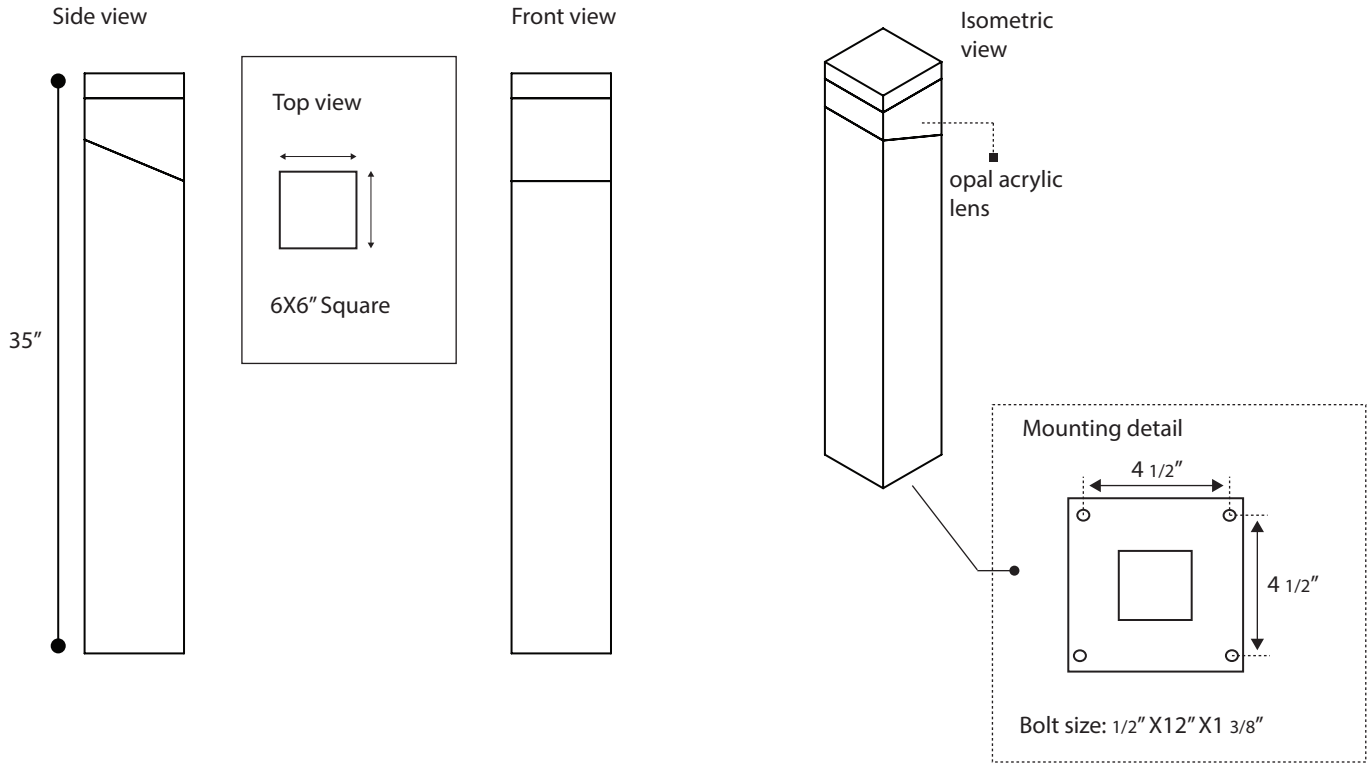
- Lumens are based on max wattage & 5000K CCT
- IES files available upon request
- Std - Standard Offering





Dimensions & Mounting:

Please note that drawings are not to scale.



Listing:

Complies to CSA and UL standards.

Polar Graph:

